

- 2,5 mm wall thickness electrostatic powder coated aluminum injection body
- Polycarbonate injection PC diffuse cover
- Stainless fittings
- IP67 driver with 6kV surge immunity

## P W Product & Power Options

Product Name	Light Color	Input Voltage (V)	Power (W)	Luminous Flux (lm)	Weight** (kg)
ARC TRIPLE	WW-NW-CW	220-240V AC	120	10.000	7,0

\*Power and Lumen values provided are based off of a "cold white (CW) LED".  
 \*\*Product weights are provided without the weight of the pole

## C Light Color Options

● WW: Warm White	3000K
● NW: Natural White	4000K
● CW: Cold White	6500K

\*Different colors are optional

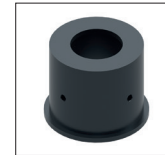
## S Driver Options

- 01 Standard Driver
- 06 DALI Driver

## G Housing Color Options



## Accessory options



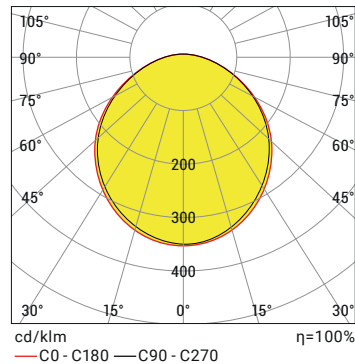
24011271  
 Mounting Accessory  
 \* Can be mount on Ø60mm pole with mounting accessory

## Control System Options

Color Type	PWM	INV PWM	DMX	DALI	0-10V DC	TRIAC
WW-NW-CW				●	●	
R,G,B,A						
RGB						
RGBA/W						
RGB DMX						
WHITE DMX						

## Product Diagrams

### Polar Diagram



### Conical Diagram

H (mt)	Ø (m)	E <sub>max</sub> (lx)
0.5	1.36	14268
1.0	2.72	3567
1.5	4.08	1585
2.0	5.45	892
2.5	6.81	571
3.0	8.17	396

ARC TRIPLE NW40 120W 220V AC IP66



### Order Code

P . W . C . S . G

